

DATE :- 23-5-2020

Class - III

DAY :- SATURDAY

SUBJECT- ENGLISH

23.5.20

CLASS-III Page ①
SUBJECT- ENGLISH
TOPIC- DESCRIPTIVE PARAGRAPH

MY CLASSROOM

Write a descriptive paragraph on the topic -
My classroom by using the following hints:

1. study in
2. ... two storey building
3. classroom part of main building
4. beautiful class
5. large one
6. benches, tables, black board
7. lecture stand
8. sufficient light and air ^{or} [airy and bright]
9. two doors and windows
10. dust bin



11. throw waste in the dustbin
12. charts related to different topics
13. rank board
14. best place to learn
15. share our knowledge
16. meet with friends
17. have a great time
18. relation building place
19. keep it neat and clean
20. love it

Note: Do this paragraph in rough note book.

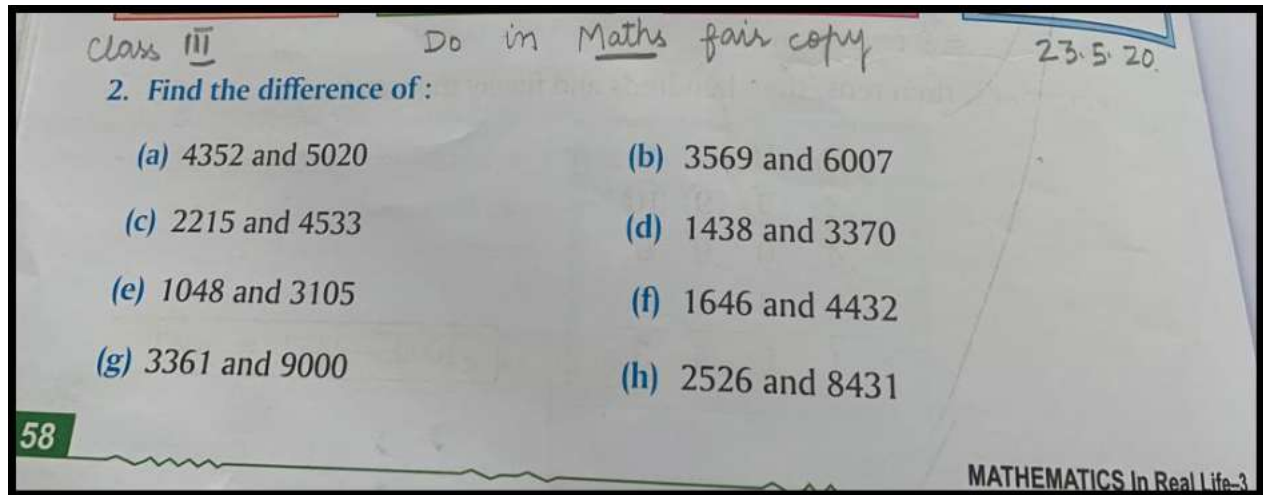
Students can develop their own lines.

Hints not be written in the note book.

SUBJECT- MATHS

To watch video please follow the link: -

<https://youtu.be/vY4CjFI8W6o>





SUBJECT- CRAFT

To see video please follow the link: - <https://youtu.be/Fjf7tyJIHv8>



Test- HINDI

कक्षा तीसरी विषय हिन्दी कक्षा परीक्षा		M.M.-10
प्रश्न 1: ए-अ तक लिखें	3+3=06	प्रश्न 3: सही मिलान करें
		01
		 ऐ
प्रश्न 2: श्रुतिलेख (Dictation)	6 x 1/2 = 03	अं
1	4	आ
2	5	इ
		

ANSWER KEY OF SCIENCE TEST

Class III

G. Science

Answer key

1. MCQ

1. a) Plant

2.c) Shoot

3.d) Chlorophyll

4. c) Stomata

5.c) Reproduction

6.c) Papaya

2. Blanks:

1. grow

2. Tap

3. Roots

4. Seed

5. Underground

6. Flowers

3. Answer the following:

1. Cauliflower, Broccoli

2. a. Tap Root

e.g. Pea, Carrot

b. Fibrous Root

e.g. Onion, Grass

3. Green Leaves make food for the plant with the help of carbon dioxide and water in the presence of chlorophyll and sunlight. This process is called photosynthesis.

4. Leaves are called the food factories of the plant because they make food for the plant by the process of photosynthesis.

5. The process of growing of a new plant from a seed is called germination.

6. Main functions of stem are:

- Supports leaves, flowers and fruits. ...
- Carries water and minerals from roots to the leaves
- Storage of food e.g. in sugarcane, potato, ginger etc. that can be eaten as food
- Carries food prepared by leaves to all parts of plant
- Holds the plant upright

7. If stomata on the plants are closed then exchange of gases in plants will not take place and plants are not able to survive.

CS Scanned with CamScanner

